

# RVC-2003-NB

## CHILLER AIR CURTAIN SUPERMARKET CABINET

### FEATURES

- Black plastic coated exterior.
- White plastic coated interior.
- Stainless steel stamped bottom and rounded corners.
- Double glazed doors with self closing system, blocked opening, magnetic gasket and possibility of changing the opening sense.
- Double leds internal lighting.
- Heavy duty shelves made of coated panel, height adjustable by supports and label holder.
- Height adjustable knobs.
- Control panel and compressor ventilation grill, removable.
- Fan assisted condenser unit.
- Fan assisted evaporator, with epoxi anticorrosion coating.
- Air curtain in the whole rear side.
- Evaporator fan stops when door is opened.
- Automatic evaporation of defrost water.
- 40 kg/m<sup>3</sup> density polyurethane insulation zero ODP and GWP.
- Digital temperature control, optimized defrost, door open and high-temperature condensation alarms. Efficient management of energy consumption.



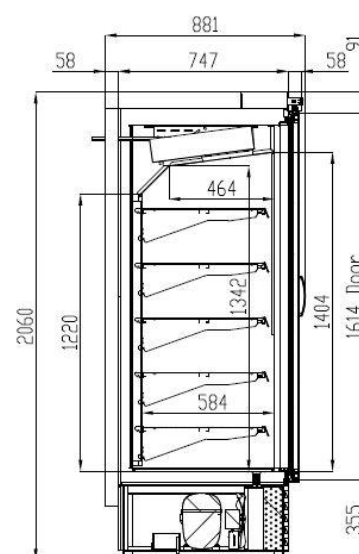
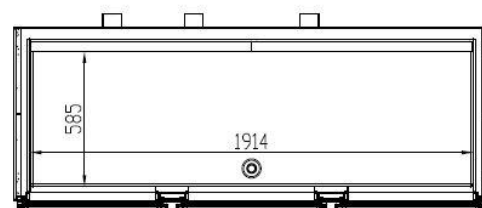
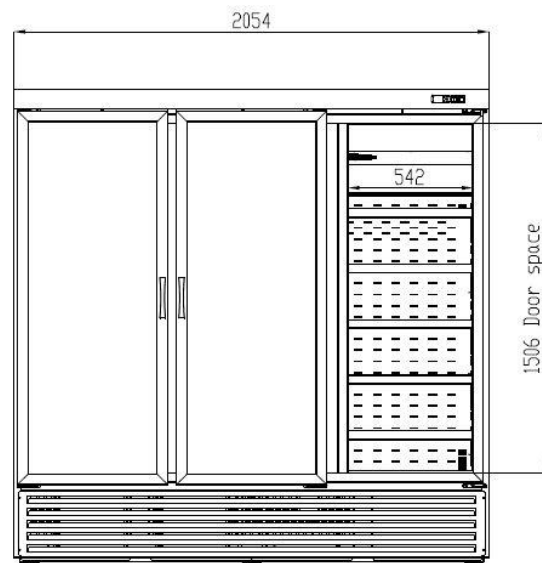
Lenght (mm)	Depth (mm)	Height (mm)	Capacity (L)	Cooling power (W)	Range	Climatic class	Coolant
2055	880	2060	1950	1710	-2°C +8°C	4 (30°C 55%HR)	R-290

We reserve the right to change specifications without prior notice, all photos must be considered as a reference

# RVC-2003-NB

## CHILLER AIR CURTAIN SUPERMARKET CABINET

Temperature control	Digital
Evaporator	Epoxy finned block
Condenser	Finned block
Voltage	230V 50Hz
Nominal power	1180 W
Insulation material	Polyurethane, 40 kg/m <sup>3</sup> density, zero ODP and GWP
Foaming agent	HFO
Exterior	Black plastic coated
Exterior rear side	Galvanized steel
Interior	White plastic coated
Lighting	Led
Number of shelves supplied	10
Shelf dimensions (W x D)	952 mm x 535 mm



We reserve the right to change specifications without prior notice, all photos must be considered as a reference